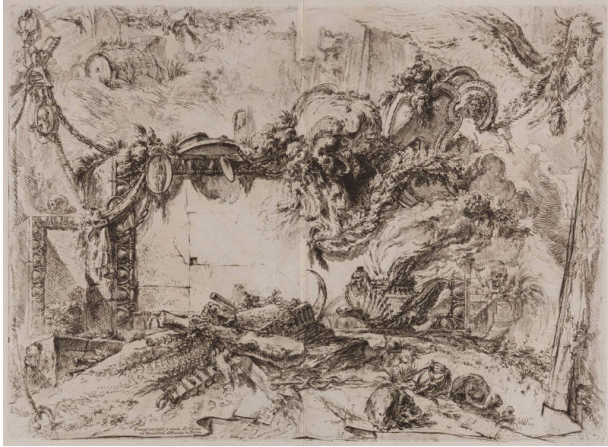


Basic Detail Report



The Monumental Tablet

Date

ca. 1761-65

Primary Maker

Giovanni Battista Piranesi

Medium

Etching with engraving and drypoint

Description

The Monumental Tablet, II/IV, one of a set of four etchings by Giovanni Battista Piranesi, commonly known together as the Grotteschi or Capricci Grotteschi, (the Grotesques or the Grotesque Caprices). The artist's name and the address of his studio are included in the plates: Piranesi inventó, ed incise (Piranesi invented and incised) Ap.o Piranesi dirimpetto l'Accademia di Francia in Roma. (Ap[artment]) Piranesi across from the French Academy in Rome). The watermark of the fleur-de-lis within a double circle surmounted by the letters CB helps to date the prints to a period between 1761 and the mid 1760s. This was the time of the second edition of the prints.

Dimensions

Overall, Image: 21 1/4 × 29 in. (54 × 73.7 cm) Overall, Mat: 24 1/8 × 32 in. (61.3 × 81.3 cm)