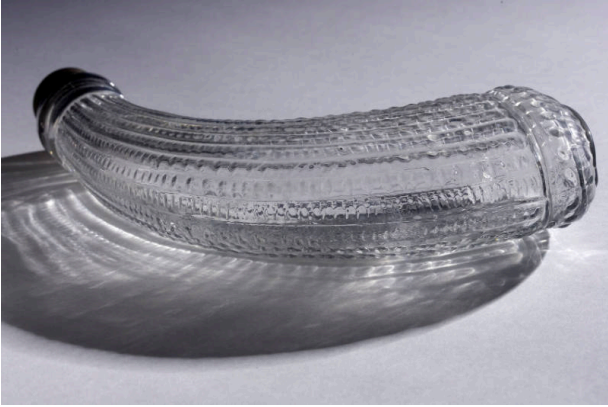


Basic Detail Report



Covered candy jar

Date

ca. 1940-1960

Primary Maker

Unknown

Medium

Blown glass | Metal

Description

Candy bottle and cap. Mechanically blown in shape of a powder horn, dotted ribs running length of body. Tin plated screw cap.

Dimensions

Overall: 8 1/2 in. (21.6 cm)