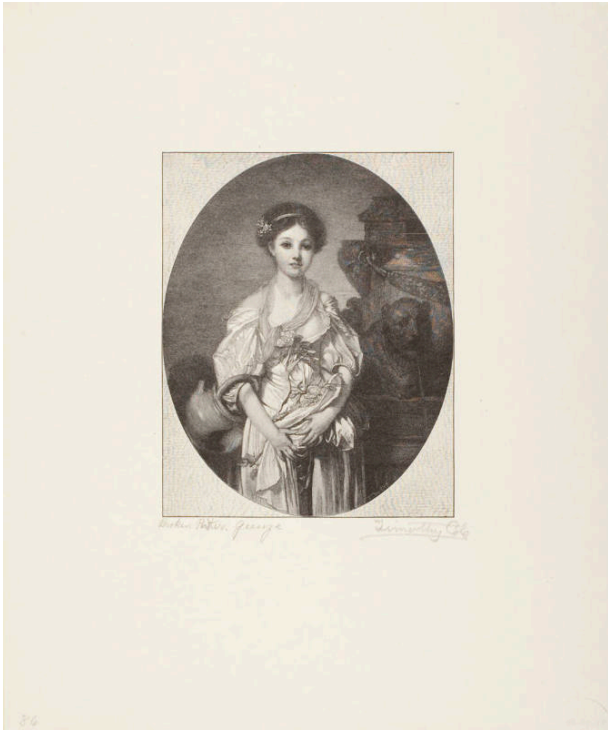


Basic Detail Report



The Broken Pitcher

Date

1907

Primary Maker

Timothy Cole

Medium

Wood engraving

Description

This is a wood engraving by Timothy Cole (after the painting, THE BROKEN PITCHER, by Jean Baptiste Greuze (French, 1725-1805). It is on dull strong thin paper. Pasted at upper corners to rough paper.

Dimensions

Overall: 6 5/8 x 5 3/16 in. (16.8 x 13.2 cm) Overall, Mat: 19 1/4 x 14 1/4 in. (48.9 x 36.2 cm)