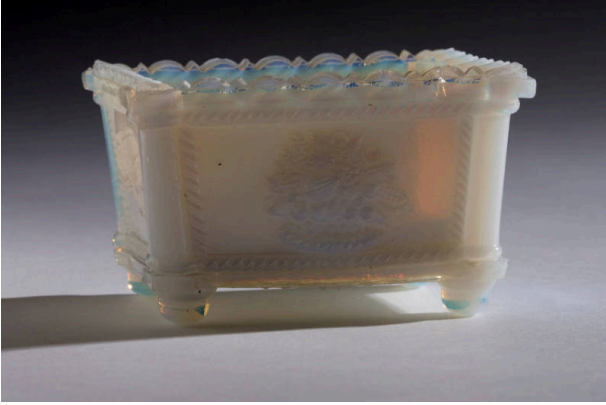


Basic Detail Report



Salt dish

Primary Maker

New England Glass Company

Medium

Pressed glass

Description

Lacy salt of opalescent rectangular glass. Four round feet.

A bouquet on two sides and a single flower on the other two sides. Fiery opalescent white, unknown Neal variety, similar to NE1a but with no rear design.

Dimensions

Overall: 1 3/4 x 2 7/8 x 2 1/8 in. (4.4 x 7.3 x 5.4 cm)