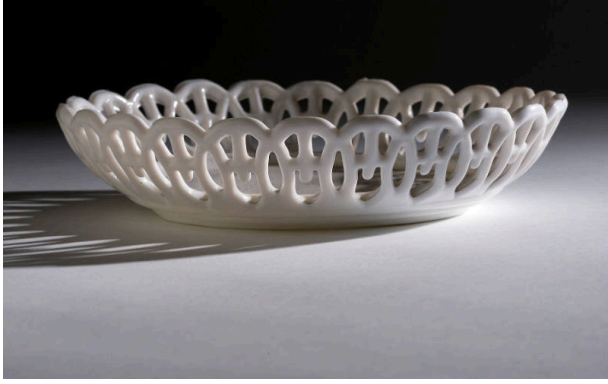


Basic Detail Report



Bowl

Date

ca. 1880-1890

Primary Maker

Atterbury & Co.

Medium

Pressed glass

Description

Bowl of pressed opal glass. Openwork border (called Wicket by Ferson) and a solid bottom. The plate shown by Ferson & Belknap might have been tooled into this bowl shape. Belknap's attribution to Atterbury doesn't seem to be iron clad. See GAAt.64.8 for a related plate.

Dimensions

Overall: 1 3/4 in. (4.4 cm) Overall, Rim: 7 13/16 in. (19.8 cm) Base: 5 in. (12.7 cm)