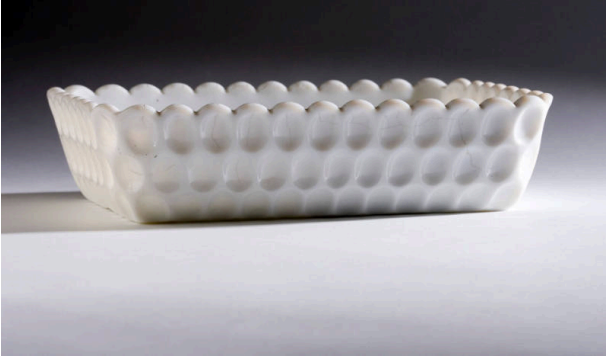


# Basic Detail Report

---



## Dish

### Date

ca. 1880

### Primary Maker

Bakewell, Pears, & Co.

### Medium

Pressed glass | Non-flint glass

### Description

Dish of pressed opal glass. Argus, "thumbprint", pattern. Rectangular shape. Three rows of thumbprints around side. Scalloped rim. Non-flint glass. Heavy. Several stress lines.

### Dimensions

Overall: 2 in. (5.1 cm) Overall, Rim: 5 3/16 x 7 7/8 in. (13.2 x 20 cm)