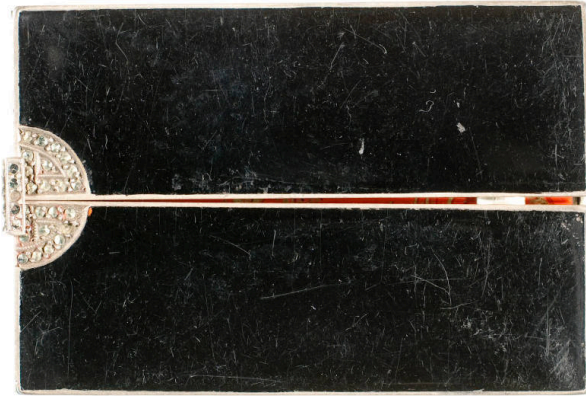


# Basic Detail Report

---



## Compact

### Date

ca. 1925

### Primary Maker

Unknown

### Medium

Enamel | Silver | Marcasite

### Description

Black enamel on silver with a marcasite clasp. Opens to a red enamel interior with an oriental landscape. The inside cover is a mirror over the powder container.

### Dimensions

Overall: 1/2 x 1 3/8 x 2 1/8 in. (1.3 x 3.5 x 5.4 cm)